



## CEPI Monthly Statistics Report

January 2008

Total Paper and Board Production <small>Representing 94% of CEPI annual paper production</small>	Jan-07	Feb-07	Mar-07	Apr-07	May-07	Jun-07	Jul-07	Aug-07	Sep-07	Oct-07	Nov-07	Dec-07	Jan-08
% Change Over Previous Month	7.9	-5.6	9.5	-5.2	3.2	-3.0	3.1	-6.7	3.3	4.2	-2.1	-6.7	8.8
% Change Over Same Month Previous Year	-0.4	0.7	0.2	1.2	0.0	1.0	1.4	1.7	-0.4	0.1	0.0	0.0	0.8
Cumulative % Change Over Previous Year	-0.4	0.1	0.2	0.4	0.3	0.4	0.6	0.7	0.6	0.5	0.5	0.4	0.8
Current Month (million tonnes)	8.16	7.70	8.43	7.99	8.25	8.00	8.25	7.69	7.95	8.28	8.10	7.56	8.22
Cumulative (million tonnes)	8.16	15.85	24.28	32.27	40.52	48.52	56.77	64.46	72.41	80.69	88.79	96.35	8.22
Total Pulp Production <small>Representing 95% of CEPI annual pulp production</small>	Jan-07	Feb-07	Mar-07	Apr-07	May-07	Jun-07	Jul-07	Aug-07	Sep-07	Oct-07	Nov-07	Dec-07	Jan-08
% Change Over Previous Month	-1.3	-5.1	8.5	-7.1	5.0	9.0	5.0	-2.0	-5.8	3.1	1.2	2.9	-0.9
% Change Over Same Month Previous Year	-1.5	0.8	3.1	0.0	0.0	0.0	-0.0	0.0	0.3	2.0	2.0	-0.6	-0.1
Cumulative % Change Over Previous Year	-1.5	-0.4	0.8	0.6	1.1	2.0	1.9	1.2	1.1	0.8	0.9	0.8	-0.1
Current Month (million tonnes)	3.06	2.91	3.15	2.93	3.00	3.05	3.12	3.05	2.88	2.97	3.00	3.09	3.06
Cumulative (million tonnes)	3.06	5.97	9.13	12.06	15.06	18.10	21.22	24.27	27.15	30.12	33.12	36.20	3.06
Total Market Pulp Production <small>Representing 80% of CEPI annual pulp production</small>	Jan-07	Feb-07	Mar-07	Apr-07	May-07	Jun-07	Jul-07	Aug-07	Sep-07	Oct-07	Nov-07	Dec-07	Jan-08
% Change Over Previous Month	-7.0	-5.1	11.7	-14.7	0.1	8.8	2.0	0.5	-6.9	-0.4	10.0	3.0	1.8
% Change Over Same Month Previous Year	-2.6	-2.5	4.7	-4.1	-3.8	0.1	-0.7	1.7	-1.0	-5.8	4.4	-1.4	7.9
Cumulative % Change Over Previous Year	-2.6	-2.6	-0.1	-1.1	-1.6	-1.3	-1.2	-0.9	-0.9	-1.4	-0.8	-0.9	7.9
Current Month (million tonnes)	0.94	0.90	1.00	0.85	0.85	0.93	0.95	0.95	0.89	0.88	0.97	1.00	1.02
Cumulative (million tonnes)	0.94	1.84	2.84	3.69	4.55	5.48	6.43	7.38	8.27	9.15	10.12	11.12	1.02
Total Recovered Paper Utilisation <small>Representing 91% of CEPI annual RP Utilisation</small>	Jan-07	Feb-07	Mar-07	Apr-07	May-07	Jun-07	Jul-07	Aug-07	Sep-07	Oct-07	Nov-07	Dec-07	Jan-08
% Change Over Previous Month	8.9	-6.7	9.3	-5.8	4.7	-1.1	1.3	-8.4	5.1	4.7	-3.1	-7.0	9.3
% Change Over Same Month Previous Year	5.1	0.7	0.2	0.7	0.2	1.6	2.3	2.2	-0.1	1.7	0.7	-0.4	0.0
Cumulative % Change Over Previous Year	5.1	2.9	2.0	1.7	1.3	1.4	1.5	1.6	1.4	1.4	1.4	1.2	0.0
Current Month (million tonnes)	3.83	3.57	3.90	3.68	3.85	3.81	3.85	3.53	3.71	3.89	3.77	3.50	3.83
Cumulative (million tonnes)	3.83	7.40	11.31	14.98	18.83	22.64	26.49	30.02	33.74	37.62	41.39	44.89	3.83

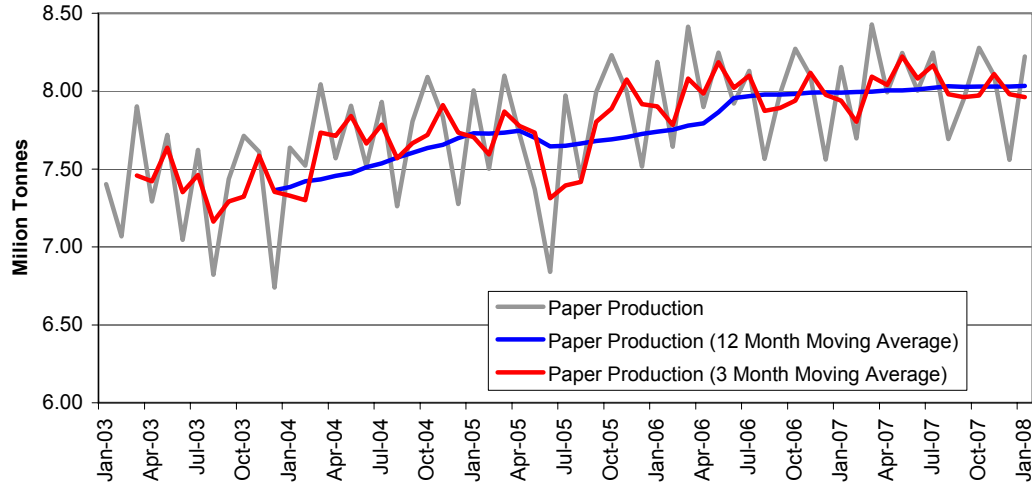
*Based on data collected from National Associations at the end of: February 2008*



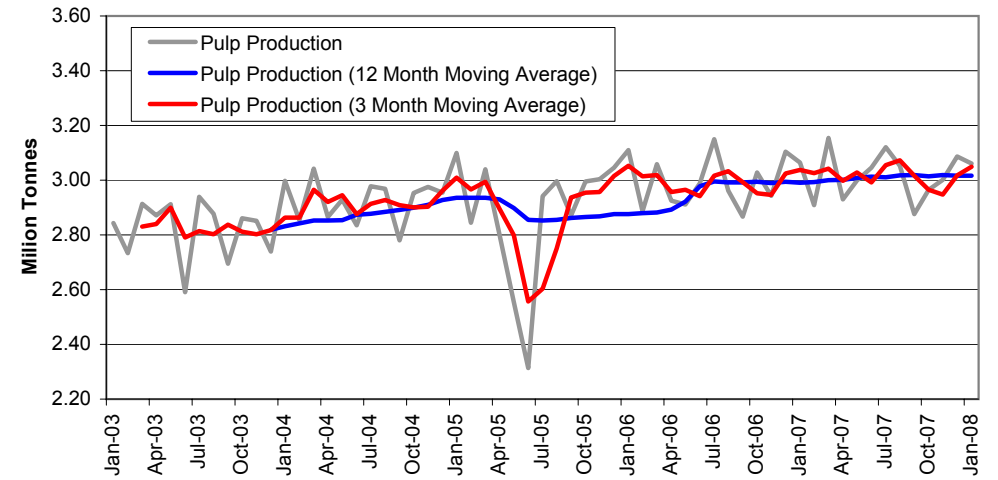
# CEPI Monthly Statistics Report

January 2008

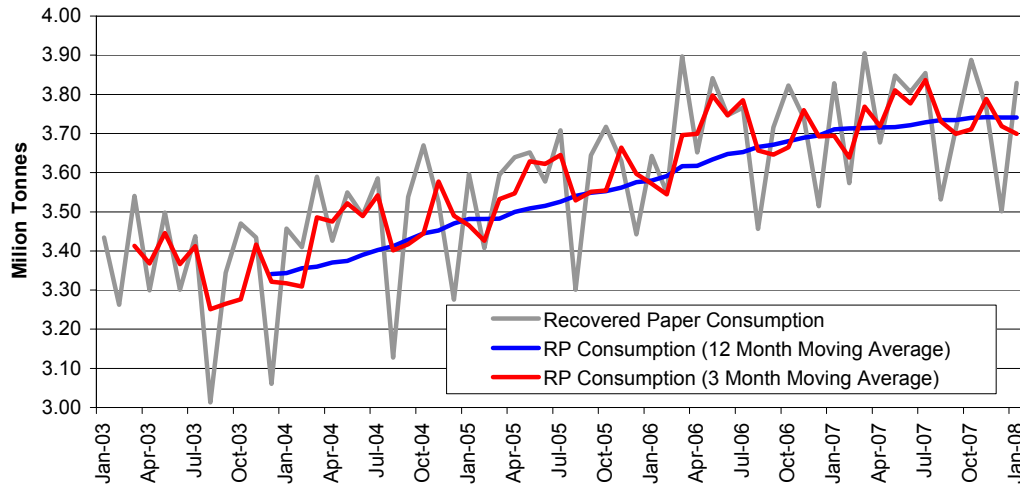
### CEPI Fast Monthly Survey: Paper and Board Production



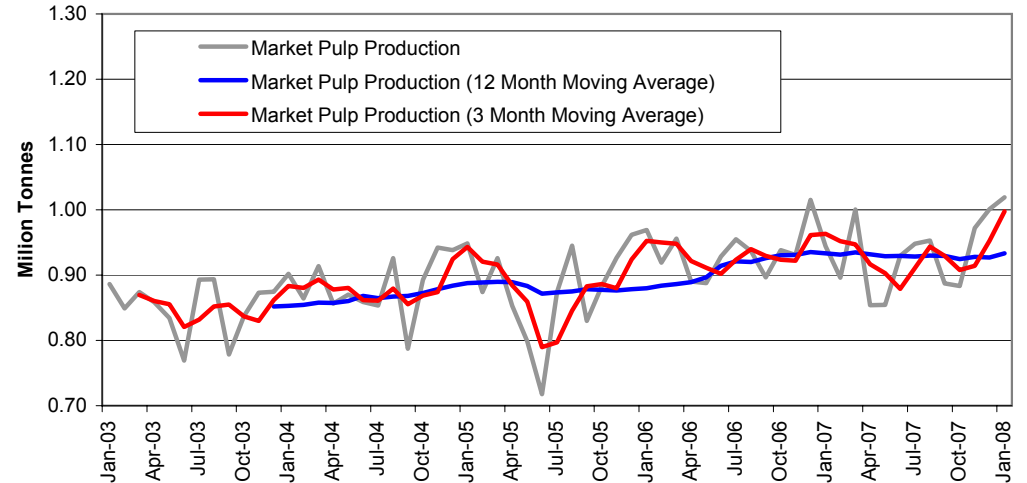
### CEPI Fast Monthly Survey: Pulp Production



### CEPI Fast Monthly Survey: Recovered Paper Utilisation



### CEPI Fast Monthly Survey: Market Pulp Production

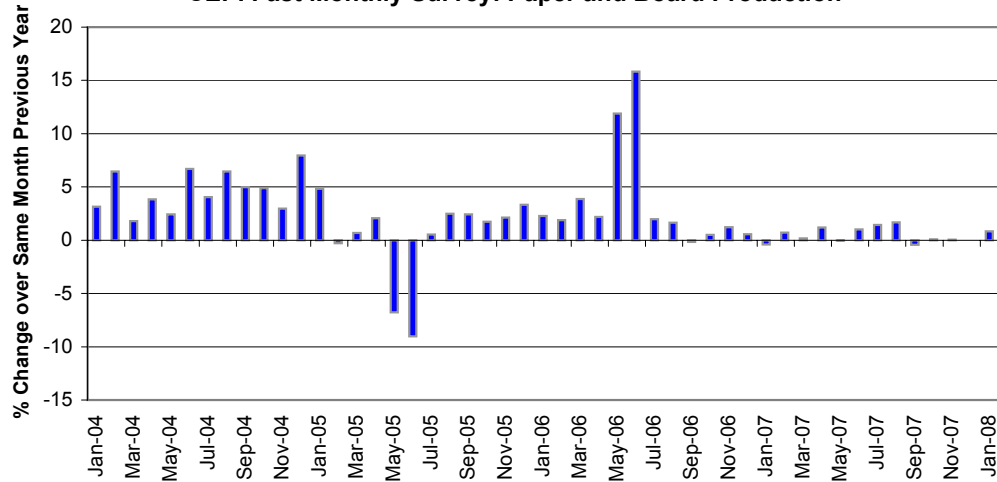




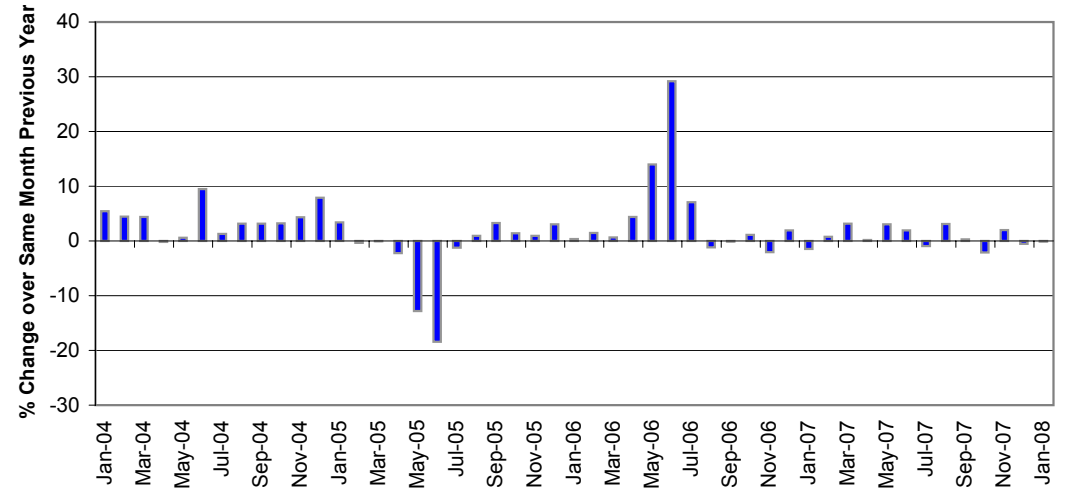
# CEPI Monthly Statistics Report

January 2008

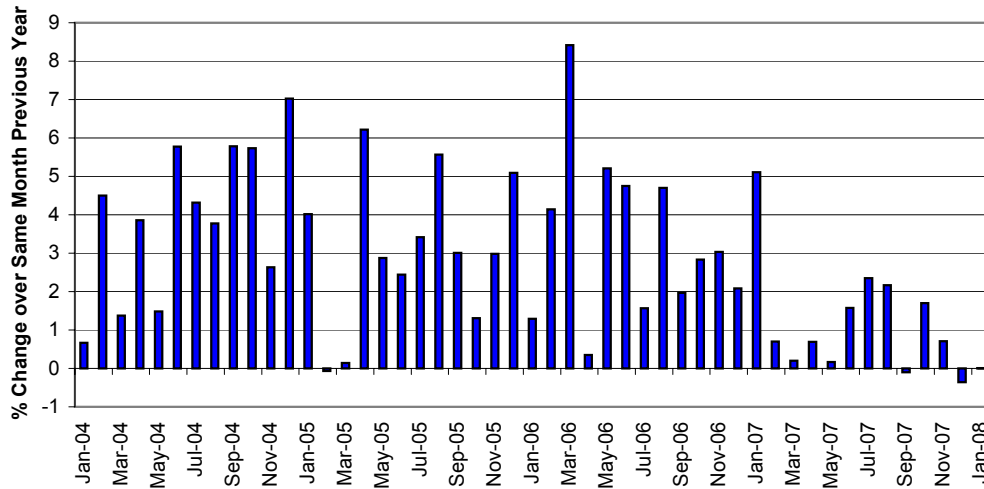
**CEPI Fast Monthly Survey: Paper and Board Production**



**CEPI Fast Monthly Survey: Pulp Production**



**CEPI Fast Monthly Survey: Recovered Paper Utilisation**



**CEPI Fast Monthly Survey: Market Pulp Production**

